



Shirley Infant School

Newsletter 5 - January 2019

DCSF: 852/2426



www.shirleyinfantschool.org.uk
office@shirleyschools.co.uk



023 8077 5057



DIARY DATES



JANUARY

Monday 21st Parent Corner 2pm
Friday 25th Year 1 Dress Up Day

FEBRUARY

Friday 1st Year 1 Home Learning due
Wednesday 6th Class Photos
Wednesday 6th Parent Forum 2pm
Friday 8th Year 2 Celebration Event 2.50pm
Friday 8th Year 2 Home Learning due
Tuesday 12th Year R Pirate Dress Up Day
Wednesday 13th Year 1 Celebration Event 2.50pm
Thursday 14th Year R Celebration Event at 2:50pm
Friday 15th School closes at 3:10pm for Half Term

SPRING 2

Monday 25th School re-opens at 8:45am SPRING 2
Tuesday 26th Year R Mill Cottage Farm Experience
Tuesday 26th Year 1 Manor Farm Trip

Welcome back to a new term. We hope you've all had a good start to the new year. The children have been amazing working so hard in their new topics. We have seen some fabulous collaboration and perseverance skills already over the past few weeks.

We are so excited that 90% of our families have signed up to our new Marvellous Me app. This app is being provided by the money raised by you. We have had many requests over the years through our parent forum for more feedback on what the children are learning each week. This has always been a challenge to give you more information than what is in the curriculum letters for that half term. However, this new app enables us to send out an alert once a week for Literacy and an alert once a week for Maths on what the children have been exactly learning that week. What we also love about it is that this app enables the senior leadership team to have more contact with you as the parents. It enables us to celebrate with you when your children come to see us for their learning style achievements. These are:

- Iggy for independence skills
- Cowan and Colana for co-operation skills
- Cubert for curiosity
- Perse for perseverance

If you have not signed up or are finding it difficult please pop in to see Mr Hack who will be happy to help.

Thank you for your support with our topics and the curriculum.

The Shirley School Team



Welcome to
Shirley Infant School

[About Us](#) [News & Events](#) [Parents](#) [Our Community](#) [Children](#) [Contact Us](#)



WEBSITE

We would like to take this opportunity to promote the school website. There is a wealth of knowledge and information on here that will support you with your child's learning, key events and Governor and FOSIS minutes of meetings.

We have a PSHE (Personal, Social, Health Education) section where you will find out about the key topics that are covered and what the School Council and Eco Councils have been up to. The PSHE section can be found under the children tab on the website.

Take a look in the parents' section for guidance on reading with your child, how to support your child with Maths and the power points from all the Year group Curriculum Workshops.

Please remember all school letters are available on the parent page of our website.

CHRISTMAS GENEROSITY



We would like to thank you for your overwhelming generosity over the Christmas period at what is an already very expensive time for families. In addition to the £253.99 raised at the Christmas performances for St James Church & The New Children's A&E Department your kind donations for the Christmas DVD have allowed us to raise in excess of £242.35 for the school which will go towards resurfacing and renovating the tired play area at the bottom of the main playground.

Maths Shops in Maths week raised £105.16. This has been put back into the maths budget.

School life has been busy with **Year 2** building on from their Theatre visit in December with their 'Beauty & The Beast' topic. The children have been busy writing descriptions of the characters and using a range of adjectives to describe the Beast. They are working towards writing their own magical stories which they are very excited to share with you!



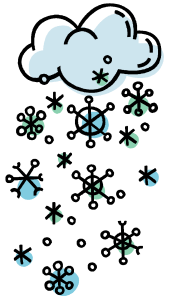
Year 1 have had a fabulous start with traditional story characters visiting them in their classrooms. They have been exploring the events from the Gingerbread Man story and creating their own stories using the Pie Corbett method. They are busily creating vehicles to take Cinderella to the ball.

Year R have been helping Adventure Bay and the Paw Patrol to discover how different people and agencies help us. They have started thinking about what emergency vehicles to build and soon will receive an exciting mission to help Ryder & the Pups which you will get to see a bit of at the celebration event.



ADVERSE WEATHER

Please ensure that your contact details are up to date in case we need to advise you of school closure in the event of snow. More information regarding procedures will be sent if and when snow is forecast. In the event of snow we will aim to notify you as soon as possible, but please check our website, Southampton City Council website or local radio also.



CONSIDERATION



May we remind you once again that **NO** scooters or bikes (regardless of age, young or old) are to be ridden in the playground. This is a matter of Health & Safety and must be adhered to at all times.

We have had more reports about cars parking on double yellow lines and some near misses involving our children. Please also be considerate of our neighbours and not block their drives **even for 5 minutes**. We know drop off and pick up is hard but **PLEASE** can we be as considerate as possible to each other. Thank you.



WHOLE SCHOOL ATTENDANCE IS CURRENTLY 97.6%

