

We recognise that good attendance (above 96%) is key to good pupil outcomes. The links between regular attendance, reaching potential attainment and future life opportunities are well researched. For this reason, the school will encourage good attendance and be robust in monitoring attendance and take action when attendance falls below the expected level. Good attendance impacts significantly on progress, learning, friendship groups and the child's overall happiness at school.

Easy as

1

There are 190 school days in a year; this leaves 175 days to spend on family time and holidays.

2

It is the responsibility of parents and carers to ensure that their child(ren) attend school every day and on time.

3

The school opens at: ; registration is from . Please arrive as close to as possible to maximise learning opportunities for your child.

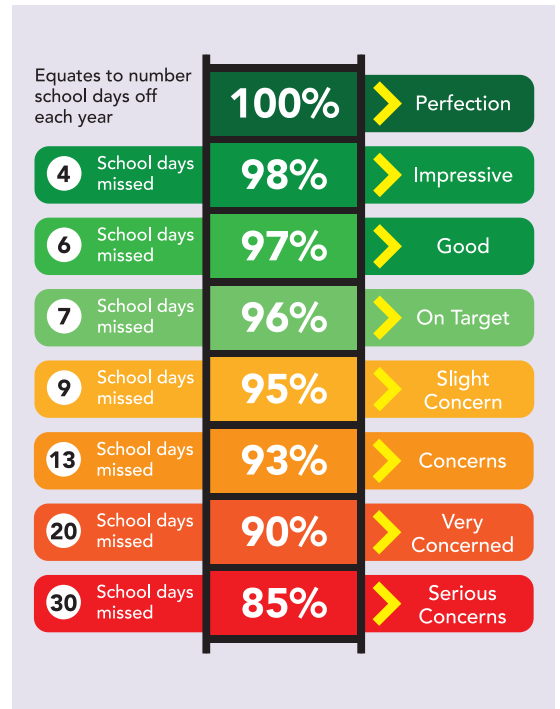


Attendance Matters

Every student Every Day

We're here to help!

We understand that there are many reasons why children may be absent or late for school. Please speak to staff about ways that we can support you with this.



If your child misses...	That equals...	Which is...	And over 13 years of schooling that's...
1 day per fortnight	20 days per year	4 weeks per year	almost 1.5 years
1 day per week	40 days per year	8 weeks per year	over 2.5 years
2 days per week	80 days per year	16 weeks per year	over 5 years
3 days per week	120 days per year	24 weeks per year	almost 8 years

Key Contacts:

Attendance Champion:

Attendance Officer:

Reporting Absences:

A parent/carer must notify the school of the reason for a child's absence before 9:30 am on the day of absence.

To report absence please:

Leave of absence is only given in very exceptional circumstances. We have a duty to follow the Local Authority code of conduct for issuing Fixed Penalty Notices for absence.

Our Attendance Policy should be read in conjunction with the Child Protection and Safeguarding Policy.

