



Shirley Infant School Weekly Communications

KINDNESS.
RESPECT.
INTEGRITY.

Friday 24th January 2025

Head Teacher Message

Dear families,

As another week comes to an end we have seen some fabulous achievements from the children. Year R have had so many visitors sharing the jobs that do. Thank you again to those families who have supported with this. Year one have been learning about the Apollo Moon landing and have loved being historians sharing their facts. Year 2 have been retelling the Peter Pan story with their story roads. They have retold the key events beautifully with their oral story telling. We can not wait to read the actual written stories.

For our PE curriculum please can we ask with the weather climate being extremely cold currently please can you provide joggers or leggings for your little ones PE kit. The children love being outdoors for PE but the weather is very cold. Please can we also ask you to ensure your child's PE kit is in school everyday. Sometimes we need to move PE around on our timetables. If you are struggling to provide a PE kit please contact our family support worker Karen Allen.



Messages:

Reminder: We are a nut-free school. Please do not send nuts or foods containing nuts to school. You can view our Healthy Schools Lunchbox policy on our website [here](#).



Coming up in your year group...

Year R



Celebration event – 12th February: 2.45pm – The children will be sharing their video with you of their hospital role play day in school.

Hospital Roleplay – 24th February. Your little ones have had a wonderful play-based learning day. They have built a hospital in the school hall together from their ideas from scratch. We can not wait to show you our video at the celebration event.

PE Kits – Please ensure your child's PE kit is in school every day. Thank you so much.



Year 1



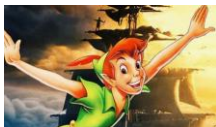
Celebration event - Friday 7th February at 2:45pm. The children will be sharing their space songs that they have learnt throughout their music unit.

Year 1 will be making rockets next week, please could we have any bottles, toilet rolls, small boxes, scrap wrapping paper, foil etc for junk modelling.

PE Kits – Please ensure your child's PE kit is in school every day. Thank you so much.



Year 2



Celebration event - Thursday 6th February: 2.45pm – The children will be sharing their Peter Pan stories with you.

PE Kits – Please ensure your child's PE kit is in school every day. Thank you so much.



Weekly Attendance Whole School Attendance for last week – 96.5%

Schools target attendance this week is -

97%



91%

99%

92%

98%

100%

95%

99%

100%

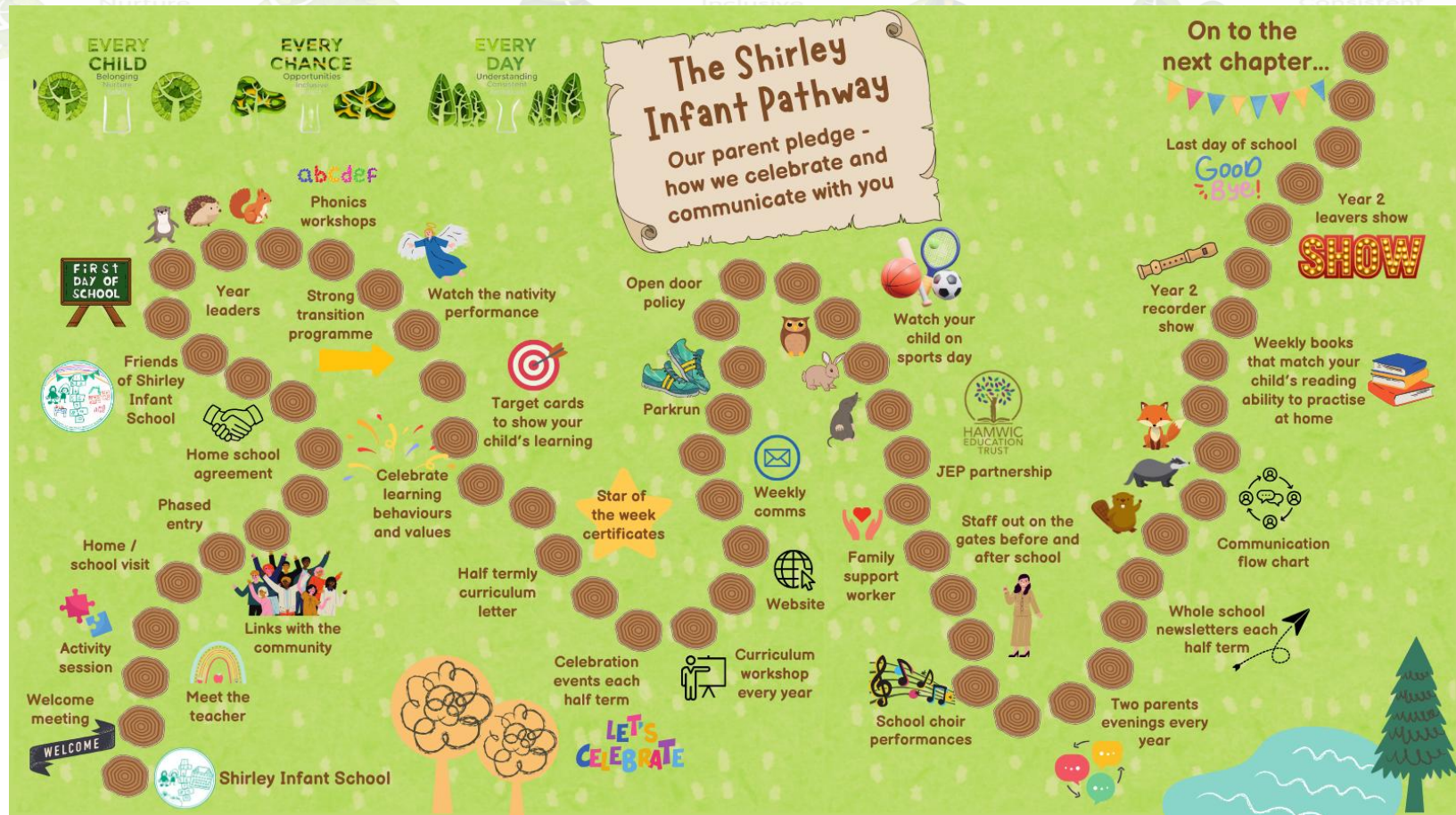
95%

If your child is not in school, we miss them greatly and will call to see how they are.

The school's Designated Safeguarding Leads are:

DSL: Mrs C Gregory

Deputy DSL: Mrs L Watts



ESS.
CT.
INTEGRITY.

Community Messages...

making music

Saturday 25th January 2025
Performances at 11am & 2pm
Central Hall, Southampton

City of Southampton Orchestra Presents:

Heroes & Villains

'The Knight Who Took All Day'
by Bernard Hughes



Conductor: John Traill
Narrated by Phil Cheesman

Join us for our ever-popular interactive family concert for children of all ages.

Includes extracts from 'Frozen' and other well-known films.
With our guests the New Forest School of Dance

Bring your favourite soft toy and meet Bernie the Bear, the orchestra's lovable mascot.



Tickets available from Ticketsource
www.ticketsource.co.uk

£9 Adult
£5 Child (Under 3s: Free)
£26 Family (2 Adults & 2 Children)
www.csorchestra.org

 @cityofsotonorch
 /cityofsotonorch


City of Southampton Orchestra

25 January 2025 | City of Southampton Orchestra

WCO
WINCHESTER CHAMBER ORCHESTRA

Paddington Bear's First Concert



Narrator James McConnachie
Illustrator Margie Sturton
Conductor Craig Law

Winchester Chamber Orchestra

Saturday 1st March 2025
The Arc, Winchester
at 11.30am and 1.30pm

Tickets £7 from
www.arcwinchester.org.uk

<https://www.arcwinchester.org.uk/event/paddington-bears-first-concert>

Community messages...

EVERY
CHANCE
Opportunities
Inclusive
Adapt

EVERY
DAY
Understanding
Consistent
Ambitious

STUBBINGTON STUDY CENTRE CLOSURE

The school has received notice that Hampshire County Council propose to close Stubbington Study Centre at the end of this school year. If you would like to share your views regarding the closure, please participate in the consultation process using the link below by 10th February:

[Consultation link](#)



SeaCity Museum - Get Ready for February Half-Term

Monday 17 February - Friday 21 February 2025

If you're looking for some inspiring ways to occupy your kids this half-term, we have plenty on offer! From short, creative workshops to family-friendly walking tours, there's something to keep everyone entertained. Our [Kids' Club](#) runs from 9am to 4pm, offering a full day of exciting activities, arts and crafts, and interactive learning. Plus, block bookings for the Kids' Club offer great value, so you can make the most of the holiday while keeping your little ones engaged and inspired.

And don't worry – we haven't forgotten about the adults either! There are a range of activities designed for grown-ups too. Whether you're looking to relax or dive into Southampton's vibrant cultural offerings, there's something for everyone this February Half-Term!

[Explore all activities.](#)



A Spring Full of Musical Adventures at Turner Sims

Fill this spring with musical treats for all ages! Babies, children and their grown-ups are invited to dance, wiggle, play and sing, as they discover the joy of live music at Turner Sims.

- Babies and toddlers under 2 can explore the magic of nature through gentle singing and sensory play with Hurly Burly Theatre's You Are The Sun on Saturday 1 February.
- Sunday 2 February invites ages 4+ to create their own soundtrack for classic animation with The Enchanted Cinema and their Orchestra of Seasons. Adults are encouraged to join in too.

Experience your first orchestra with the Shostakovathon, or meet the puppet Pythagoras as she conducts musical experiments with her Toolkit in March! Explore The Wonderland Garden in April as the City of London Sinfonia and Landmark Theatres bring the changing seasons to life.

Fill your diary with magical memories for you and your family this year - [find out more and book your tickets here.](#)

KINDNESS.
RESPECT.
INTEGRITY.