



# Shirley Infant School Weekly Communications

KINDNESS.  
RESPECT.  
INTEGRITY.

## Friday 10<sup>th</sup> January 2025

### Head Teacher Message

Dear families,



We would like to take this opportunity to wish you all a very Happy New Year. We are excited for the term ahead and all the opportunities and learning we have for the children. **Year R** start their People who help us topic. **Year 1** start their Out of this World topic and **Year 2** start their Journeys into the Unknown. Our PSHE topic for this half term is Going for Goals and the children will be asked to think about their skills they would like to get better at/improve. We teach them that it is ok to not be able to achieve something right away and that asking for help and working with someone is the bravest thing you can do. We always model to the children making mistakes and how to overcome these.

We have been working with our parent forum on how we can share more with you that we do for enrichment with the children. Please take a look in your child's book bag for our new Road maps. We have these on the website too. Thank you so much to the team at Spectrum Signs for designing these for us.



### Messages:

#### Numbots

We know the holidays are a busy time but just to remind you we have a new online app to help your child practice their maths fluency at home. Your child was given a username and password along with a how to in their book bags before the holidays. The app is for use at home and can be used to support your child at home.

#### PANTS

Just a reminder from our weekly comms before the holidays. We have had an increasing number of children not being respectful of or not understanding the PANTS rule. The whole school had the NSPCC PANTS lesson taught to them on the last Friday of Autumn 2. These lessons were brought forward from their curriculum planned sequence for PSHE. We would appreciate your joint teaching with this and if you can follow these conversations up using the same resources this will support the overlearning and help enable the children to retain this learning. Please use this link for the parent guidance:

[Let's talk PANTS with Pantosaurus! | NSPCC](#)

#### Christmas jumpers/T-shirts

Are you having a clear out? If you are looking to donate we would love to create a box to support little ones next year who are not able to bring a Christmas jumper to school. Please hand your kind donation to the school office.

# Coming up in your year group...

## Year R

**Curriculum Letter** – See attachment



**Celebration event** – 12<sup>th</sup> February: 2.45pm – The children will be sharing their video with you of their hospital role play day in school.

**New Curriculum Road Maps** – Take a look in your child's book bag for our New Road maps. One is for our enrichment activities that your child/ren will take part in during their journey with us. The other is the different ways we communicate your child's learning and progress opportunities we have with you.

## Year 1

**Curriculum Letter** – To follow next week



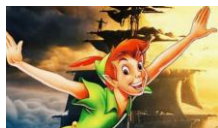
As part of our space topic next week, the children will be making rockets as part of their instruction writing. We would be very grateful for any empty 500ml plastic bottles to support the making of their rockets. Please can all the children bring in a **small** cereal box e.g a breakfast bar box over the next few weeks. Thank you - we will be making moon buggies.

**Reading books** – these will be coming home next week, please log into the E-book library where you can access the books online.

**New Curriculum Road Maps** – Take a look in your child's book bag for our New Road maps. One is for our enrichment activities that your child/ren will take part in during their journey with us. The other is the different ways we communicate your child's learning and progress opportunities we have with you.

## Year 2

**Curriculum Letter** – See attachment



**Celebration event** - Thursday 6th February: 2.45pm – The children will be sharing their Peter Pan stories with you.

**New Curriculum Road Maps** – Take a look in your child's book bag for our New Road maps. One is for our enrichment activities that your child/ren will take part in during their journey with us. The other is the different ways we communicate your child's learning and progress opportunities we have with you.

**Weekly Attendance** Whole School Attendance – 92.5%

Schools target attendance this week is -

97%



93%	99%	86%	92%	91%	91%	94%	96%	92%
-----	-----	-----	-----	-----	-----	-----	-----	-----

If your child is not in school, we miss them greatly and will call to see how they are.

The school's Designated Safeguarding Leads are:

DSL: Mrs C Gregory

Deputy DSL: Mrs L Watts

KINDNESS.  
RESPECT.  
INTEGRITY.

# School Messages...

EVERY  
CHANCE  
Opportunities  
Inclusive

EVERY  
DAY  
Understanding  
Consistent

## Shirley Schools Astro Appeal

Help us fundraise £10,000 to support the replacement of the shared astro pitch. In return for a £10 donation, you can 'own' a square metre of the new astro, [click here](#) to find out more and sign up. You'll be taken to the Infant School website, but the opportunity is open to families of both schools. A letter with a paper version of the sign-up form will be coming out in book bags soon, so please keep an eye out. Any questions, please email [fosis@shirleyschools.co.uk](mailto:fosis@shirleyschools.co.uk) We're also working on advertising opportunities for local businesses, so watch this space for more info!

## Tennis ball challenge for Spring One.

### Shirley Infant School Tennis ball challenge

This half term's challenge is to see how many throws in air you can make without dropping the ball.

You can do this just by throwing and catching or can you add a clap in between each throw? Remember this is a challenge with yourself.

We will ask for your best score at the end of next half term.

## Parenting Children with ADHD

If you would like to apply for a place on this course please email Karen Allen for the self referral form. ([karen.allen@shirleyschools.co.uk](mailto:karen.allen@shirleyschools.co.uk))

Please note this course is for parents of children up to the age of 11 years; it is not suitable for Senior School pupils.

**Parenting Children with ADHD**

For parents & carers of children with ADHD aged 3 - 11 years old.

**FREE**  
8 week online course  
via Zoom

**Mondays 7pm - 9pm**  
Starting 13th January 2025

Course dates: 13th, 20th, 27th January,  
3rd, 10th, 24th February and 3rd, 10th March.

**To book a place email:**  
[info@sftrust.org.uk](mailto:info@sftrust.org.uk)

**Help to learn more about ADHD!**

- Coping with feelings
- Meeting your child's emotional needs
- Boost your parent/child relationship
- Improve their self esteem
- Use effective discipline
- Tips for home, school & wider family
- Channel your child's energy

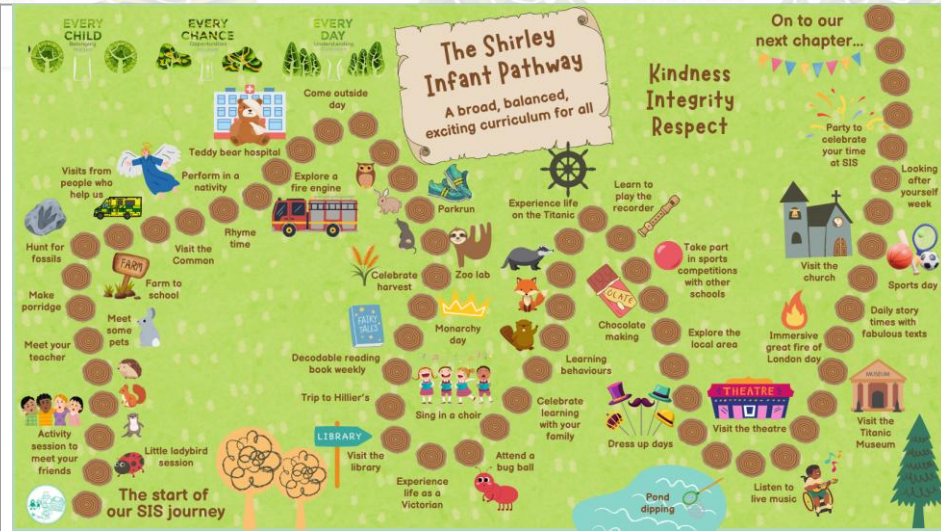
**COMMUNITY FUND**

**Southampton Family Trust**  
Building tomorrow's success

DNES.  
PECT.  
INTEGRITY.



# School Messages...



## Spring Term INSET Day Reminder

The school will be closed for staff training on:

Monday 10<sup>th</sup> February 2025

Monday 24<sup>th</sup> February 2025

Friday 28<sup>th</sup> March 2025

## Spring Term Census – Special Meal

Thursday 16<sup>th</sup> January is census day, when the school submits data to the government to help calculate funding for the school. Ordering your child a school meal on this day will assist us in gathering accurate data. A special menu is on offer to celebrate Australia Day.

Please order online at <https://app.schoolgrid.co.uk/>

# Community Messages...

EVERY  
CHANCE  
Opportunities  
Inclusive

EVERY  
DAY  
Understanding  
Consistent

## NHS Pharmacy First Service

Did you know that the NHS Pharmacy First Service enables children and adults to get convenient access to healthcare advice and treatment where appropriate, for seven common conditions without the potential delay of having to wait for a GP appointment? Accessing the service may mean that can help children feel better and back to school as quickly as possible, as well as supporting parents/carers to also get better if they are unwell with one of the conditions covered under the service.

There is no need to make an appointment; parents or carers can pop into their local Boots pharmacy with their child and ask for help under the service.

Support for the following conditions can be accessed under the service, free of charge (unless NHS prescription charges apply):

### Common condition

### Patient eligibility

Earache	1 to 17 years
Impetigo	1 year and over
Infected insect bites and stings	1 year and over
Sore throats	5 years and over
Sinusitis	12 years and over
Uncomplicated urinary tract	Women 16 to 64 years
Shingles	18 years and over

More information can also be found at [nhs.uk/thinkpharmacyfirst](https://www.nhs.uk/thinkpharmacyfirst)



## Introducing Maple Family Hub

From Monday 6 January, the Ashby Centre Family Hub will be relocated to Maple Family Hub. This new location is perfect for children with a playroom, training room and garden.

Address: Maple Family Hub, Helvellyn Road, Millbrook, Southampton SO16 4AS

Sessions running at Maple:

Bumps and Babies (9.30 - 11.30am on Mondays)

Breastfeeding Support (Thursdays from 9.45 – 11.15am)

Infant Massage programme (26 February – 26 March)

Find all our [Family Hub locations on our website](#).

## Uniform Discount Code

To celebrate the start of 2025, My Clothing are offering a discount code for parents: **UNIFORM10%**. This offers 10% off all school uniform orders at [MyClothing.com](https://www.MyClothing.com) and expires on 31<sup>st</sup> March 2025.

KINDNESS.  
RESPECT.  
INTEGRITY.