

Year 2 - Maths

**Mental maths**

$$18 + 18 = 36$$

$$22 + 8 = 30$$

$$50 \div 10 = 5$$

$$20 \div 2 = 10$$

$$52 - 49 = 3$$

$$38 - 16 = 22$$

$$5 \times 5 = 25$$

$$4 \times 10 = 40$$

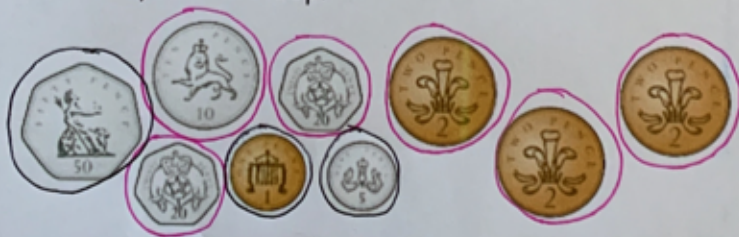
This weeks **maths** focus is: **Money**.

1. Can you order these coins from the smallest value to the biggest.



1p, 2p, 10p, 20p, 50p

2. Can you circle 56p?



Note - there are other possibilities.  
There are 2 ways :)

option 1  
option 2

3. Can you count the money?



12 p

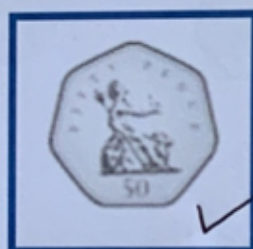


23 p

4. Tick which box has more money in.



= 40p

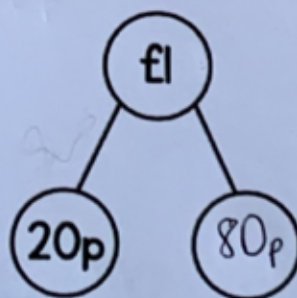


= 50p

5. There are 2 parts to this question.

a) How many 10p are in £1? 10

b) If you know how many 10p in a pound can you fill in this part-whole model?

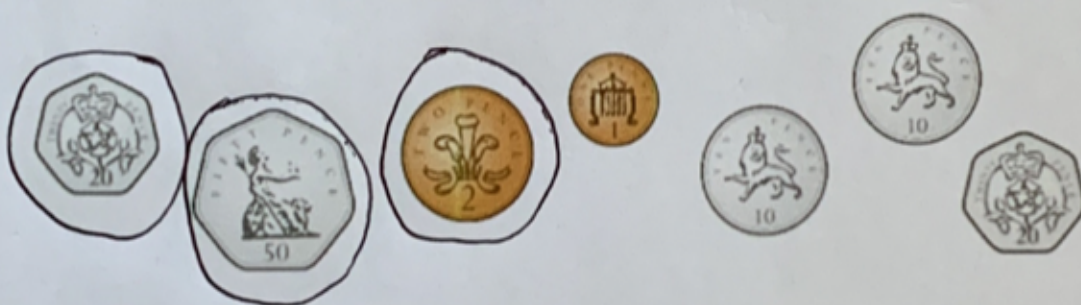




6. How many different ways can you make the total 37p?  
(remember you can only use the coins that there are!  
There are no 7ps!!) Here is one example. There are more ways.

37p —  $10p + 10p + 10p + 5p + 2p$

7. Donna has 50p. Tim has 22p more than Donna. Circle the coins that Tim has.



8. A dress cost £32. There were some shoes for £18 more than the dress. How much were the shoes?

$$\begin{array}{c} 40 \\ \text{---} \\ 32 + 18 \\ \text{---} \\ 10 \end{array}$$

£ 50

## CHALLENGE:

Here is a café price list for sandwiches.

Cheese	32p
Egg	29p
Chicken	35p
Jam	33p

Tommy buys two sandwiches.

The total cost is 65p.

Which two sandwiches does he buy?

Jam and Cheese

Rosie buys a jam sandwich.

She pays with a single coin.

She receives 17p change.

What coin did she use to pay?

50 p